



✕ CLOSE

Surface Mount Type TACT Switch(TM) > SKPS Series > SKPSAAE010

Contact Resistance Type (Surface Mount Type) SKPS Series

[Dimensions](#) | [Land Dimensions](#) | [Circuit Diagram](#) | [Packing Specifications](#)

| [Soldering Conditions](#) | [3D CAD](#) |



Part number
SKPSAAE010



Product Specification



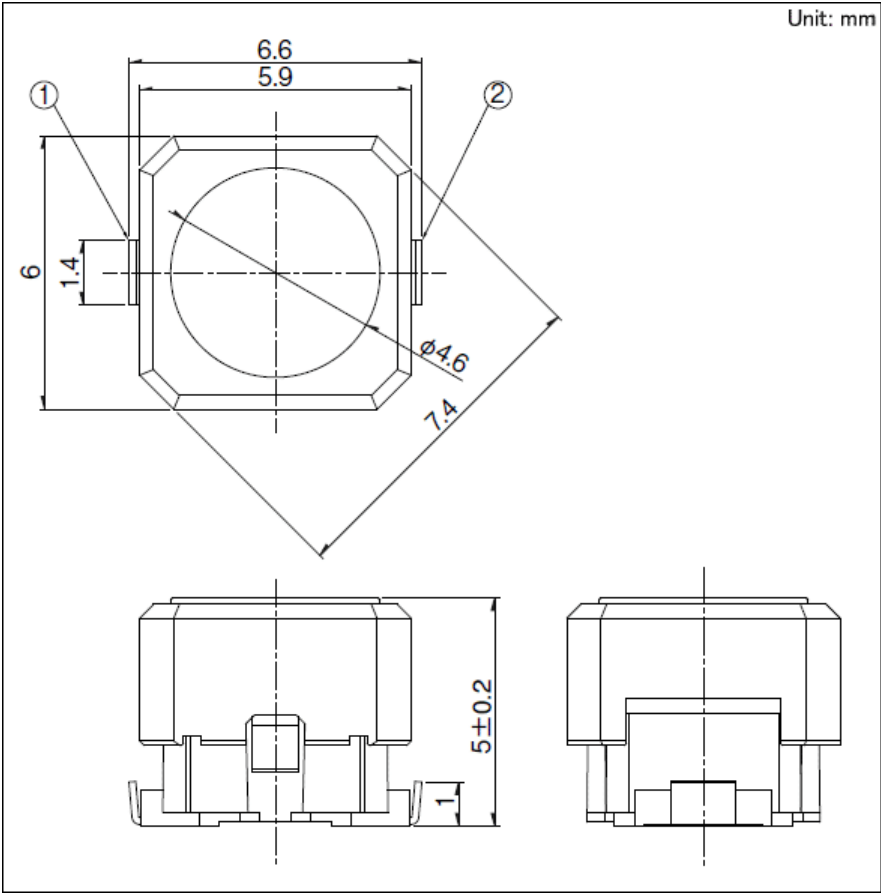
Series Common Info



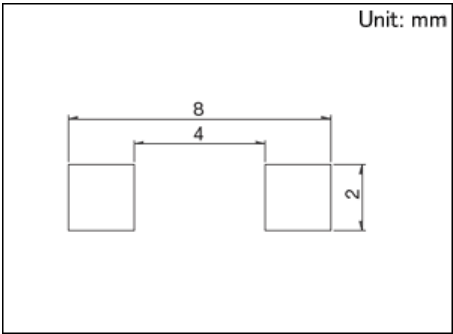
Print

Type		Surface mount
Operating force		3.6N
Operating direction		Top push
Travel		1.05mm
Operating life (5mA 5V DC)		300,000 cycles
Initial contact resistance		100mΩ max.
Series type		Soft feeling type
Operating temperature range		-40°C to +90°C
Rating (max.)		50mA 16V DC
Rating (min.)		10μA 1V DC
Electrical performance	Insulation resistance	100MΩ min. 100V DC for 1min.
	Voltage proof	250V AC for 1min.
Durability	Vibration	10 to 55 to 10Hz/min., the amplitude is 1.5mm for all the frequencies, in the 3 direction of X, Y and Z for 2 hours respectively
Environmental performance	Cold	-40°C 1,000h
	Dry heat	90°C 1,000h
	Damp heat	60°C, 90 to 95%RH 1,000h
Minimum order unit (pcs.)	Japan	2,000
	Export	2,000
3D CAD (STEP)		↓
Certificate of Compliance to RoHS regulations		↓

Dimensions

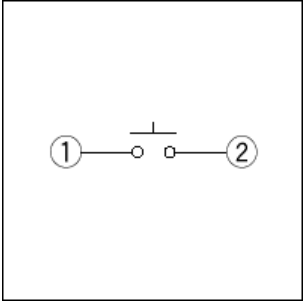


Land Dimensions



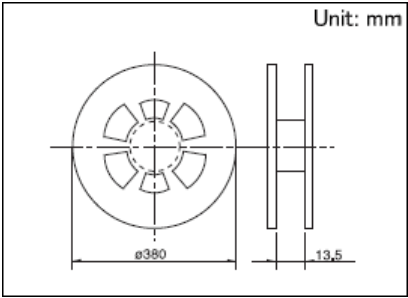
Viewed from mounting face.

Circuit Diagram



Packing Specifications

Taping

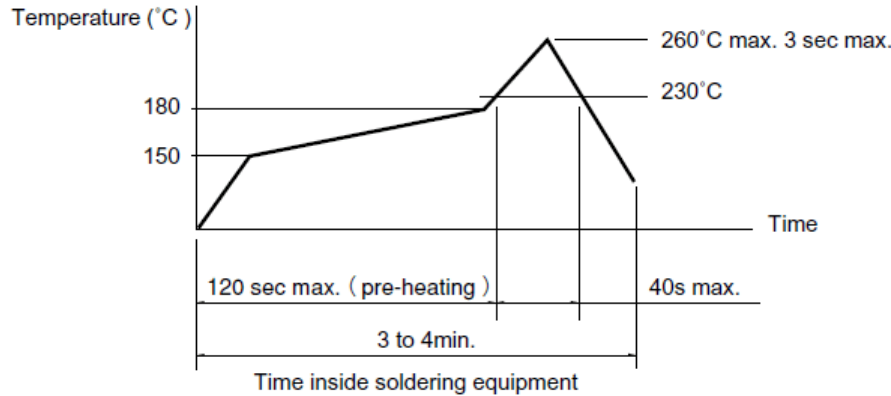


Number of packages (pcs.)	1 reel	2,000
	1 case / Japan	20,000
	1 case / export packing	20,000
Tape width (mm)	12	
Export package measurements (mm)	395 × 395 × 205	

Soldering Conditions

Condition for Reflow

1. Heating method
Double heating method with infrared heater.
2. Temperature measurement
Thermocouple 0.1 to 0.2 Φ CA(K) or CC(T) at solder joints (copper foil surface). A heat resisting tape should be used for fix measurement.
3. Temperature profile



- (1) The above temperature shall be measured of the top of switch. There are cases where PC board's temperature greatly differs from that of the switch, depending on the material, size, thickness of PC board's and others. Care, should be taken to prevent the switch's surface temperature from exceeding 260°C.
- (2) Soldering conditions differ depending on reflow soldering machines. Prior verification of soldering condition is highly recommended.

Manual Soldering

Items	Condition
Soldering temperature	350°C max.
Duration of soldering	3s max.
Capacity of soldering iron	15W max.

1. Consult with us for availability of TACT switch™ washing.
2. Prevent flux penetration from the top side of the TACT switch™.
3. Switch terminals and a PC board should not be coated with flux prior to soldering.
4. The second soldering should be done after the switch returns to normal temperature.

Notes are common to this series/models.

1. This site catalog shows only outline specifications. When using the products, please obtain formal specifications for supply.
2. Please place purchase orders for taping products per minimum order unit (1 reel or a case).
3. For $\phi 330$ mm diameter reel requirements, please contact us.
4. This products can be used in vehicles.
Although these products are designed to perform over a wide operating temperature range, please ensure that you receive and read the formal delivery specifications before use.

Inquiries about Products

 [Inquiry](#)

Mouser Electronics

Authorized Distributor

Click to View Pricing, Inventory, Delivery & Lifecycle Information:

[Alps Alpine:](#)

[SKPSAAE010](#)